



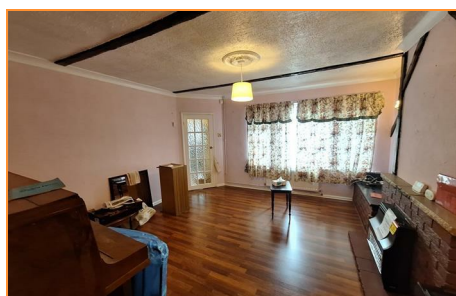
## 28 Churchfield Road, Walton, Peterborough, PE4 6HD

**Offers Around £220,000**

Nestled on the charming Churchfield Road in Walton, Peterborough, this delightful semi-detached bungalow offers a perfect blend of comfort and convenience. With three well-proportioned bedrooms, this property is ideal for families or those seeking a peaceful retreat.

Situated in a desirable location, this bungalow benefits from the amenities of Walton and the surrounding areas, offering a blend of local shops, parks, and schools. The community is known for its friendly atmosphere, making it an excellent choice for families and professionals alike.

This semi-detached bungalow on Churchfield Road presents a wonderful opportunity for those looking to settle in a peaceful yet vibrant neighbourhood. With its spacious living areas and convenient location, it is a property not to be missed.







**Entrance Hallway**

21'9 x 6'9 (6.63m x 2.06m)  
Upvc door to front, laminate flooring, radiator, doors leading to all rooms.

**Lounge/Diner**

14'2 x 14'4 10'7 x 7'2 (4.32m x 4.37m 3.23m x 2.18m )  
Upvc window to front, wood flooring, radiator, brick built fireplace and surround, arch way to diner room with patio doors leading out to the garden.

**Kitchen**

14'1 x 7'8 (4.29m x 2.34m )  
Fitted with a range of base units with work tops over, space for freestanding fridge / freezer, stainless steel sink, cooker and space for washing machine. Window to front and door to side

**Bathroom**

7'9 x 5'9 (2.36m x 1.75m )  
Upvc window to side, Fully tiled walls, bath, wc, sink ,shower cubicle with built in shower , radiator, vinyl flooring

**Bedroom 1**

13'1" x 10'7" (4.01m x 3.25m )  
Upvc window to rear, built in wardrobes, radiator, carpet

**Bedroom 2**

11'2 x 10'03 (3.40m x 3.12m)  
Upvc window to side, built in wardrobe, radiator, carpet

**Bedroom 3**

10'2 x 6'6 (3.10m x 1.98m)  
Upvc window to rear, radiator, carpet

**Car Port**

25'4 x 9'7 (7.72m x 2.92m )  
Double gates to the front, fully enclosed leading to single garage

**Garage**

15'8 x 9'1 (4.78m x 2.77m )

**Out Buildings**

Electrics, storage

**Outside**

The front provides off road parking for several vehicle's, small area of bedding plants, driveway leads to a fully enclosed car port then on to a single Garage , The rear garden is mainly laid to lawn and fully enclosed.

